

BN112SY

FITTING INSTRUCTIONS

NISSAN XTRAIL T32 SERIES 2 2/17on BIG TUBE WITH BUMPER LIGHTS VEHICLE FRONTAL PROTECTION SYSTEM (VFPS) FOR AIR BAG & ADR COMPLIANT VEHICLES

Ensure these instructions are left with the vehicle owner and/or operator.

Check installation hardware before commencing.

Should vehicle not have fog lights installed, an aftermarket wiring harness will need to be installed. Please ask your ECB dealer for an ASL Wiring kit

1. Lift bonnet.
2. Remove four push pull plastic clips from top of grill between headlights. Using a flat screwdriver, from hole in top of grille near the headlight, rotate front section of the plastic clip whilst gently pulling forward to unclip. **See figure 1.** Using the same screwdriver, gently lever the outer lower corner clips by placing tip between the grille and the clip. Press centre clips up to remove grille.
3. From front of wheel arches, remove two T20 Torx screws. Underside front of vehicle, remove four T20 Torx screws (per side) and six plastic push pull clips across the centre. Pull inner guards away from underside of vehicle and disconnect fog lights (if fitted).
4. Carefully pull wheel arch trims away from front of bumper end and guard to second clip. **See figure 2.** Remove one 10mm head screw (per side) and two plastic clips from area on inner guard where T20 Torx bolts were removed. Carefully pull sides of bumper out to unclip from guard and then forward to unclip from headlight. Carefully remove two plastic push pull clips from beside headlights (caution, these are the last two clips and bumper may fall from vehicle).
5. Remove polystyrene infill from bumper support.
6. Remove lower plastic bumper support, two 10mm nuts and four push pull plastic clips and lower air dam, two push pull plastic clips.
7. For vehicles with sonar unit: remove four 10mm head bolts from top of bumper support retaining sonar unit. Support sonar unit up away from bumper support.
8. From top mount of oil cooler, remove two 10mm bolts. Allow oil cooler to hang.
9. Under right hand headlight, remove sensor box and mount from top of bumper support. One 10mm head bolt. Remove air sensor from passenger's side.
10. Remove bumper support from crash can, six 12mm head bolts.
11. Trim air dams on vehicle to allow access to mount for tightening of bolts and mount fitment. **See figures 3 and 4.**
12. Fit ECB steel mounting bracket (supplied) onto crash cans using original equipment nuts. **See figure 5.** Centralise to vehicle and tighten all nuts. Using ECB steel mounting bracket as a guide, drill two holes (per side) where existing holes in crash can are situated to 10mm. **See figure 6. Blow filings clear and treat all exposed metal with a rust inhibitor.** Install two M10 x 30 bolts, flat washers, spring washers and nuts (per side). Tighten all bolts.

13. Install ECB steel mount gussets (supplied) to top and bottom of the crash can using M8 x 120mm bolts, flat washers and nyloc nuts (supplied) for passengers side and M8 x 110 bolts, flat washers and nyloc nuts (supplied) for drivers side. Fit two M10 x 30 bolts to top and one M10 x 30 bolt, flat washers, spring washers and nuts (supplied) to bottom at rear of bumper support. Tighten all bolts. **See figures 7 and 8.**
14. Fit oil cooler and sensor box back into position on ECB steel mounting bracket using three M6 x 20 bolts, flat washer and nyloc nuts (per side) (supplied). Install air sensor back to original position, using a zip tie to hold firmly in position. Zip tie wiring to top of ECB steel mounting bracket. **See figure 9 and 10.**
15. Refit polystyrene infill back to front of ECB steel mounting bracket.
16. Using measurement of ECB steel mounting bracket, trim lower radiator grille to fit over. Allow extra room to outside of mount for alloy protection bar to slide in.
17. Splice ECB wiring harness into wiring harness behind headlight using cable locks (supplied). Ensure harness is clear of sharp edges and moving parts.
18. Connect ECB Quick Click bumper light wiring harness (supplied) into original wiring harness. Should vehicle not be equipped with fog lights from standard, wire vehicle using aftermarket wiring kit (ASL wiring kit available through your ECB distributor) with switching wires attached to parking lights for correct operation.
19. Remove fog lights from plastic bumper. Replace bumper light surround for best finish on fitment completion. Should vehicle not have original equipment fog lights, a hole will need to be drilled in the inner corner of the blanking trim to allow exit of the fog light and indicator wiring for the ECB protection bar.
20. For vehicles with camera unit in grille: remove two PK screws, remove camera unit.
21. Refit bumper back to vehicle as per reverse of steps 2 to 4. Please do not refit lower plastic bumper support or lower air dam at this point. This area will be needed to fit rear bolts of protection bar.
22. Fit ECB LED indicator / park lights into protection bar as per instructions supplied with the LED indicator kit. **See figure 11.**
23. Attach ECB bumper lights to protection bar. Place M6 x 20 bolts, spring washers (supplied) through light mount from inside and attach nut to top. Slide assembly into light mount in Protection bar and centralize light to hole. **TIGHTEN FIRM ONLY. See figure 12.**
24. Install camera unit to rear of Protection bar using two self-tapping PK screws. Ensure camera is central to hole in Protection bar channel.
25. Attach 6mm clip lock trim (supplied) to top of ECB protection bar. **NOTE:** Trim off lower edge on an angle so trim will sit flush with end of protection bar. **See figures 13, 14 and 15.**
26. Attach 6mm clip lock trim (supplied) to air dam holes in ECB protection bar skirt. **NOTE:** Place join to centre top of hole and trim ends flat for best finish.
27. Install ECB protection Bar onto ECB steel mounting brackets using six M10 x 40 bolts, flat washers, spring washers and nuts (supplied). Rear bolts are accessed from under the bumper of the vehicle. **TIP:** bolts fitted from the inside of the protection bar gives the best results.
28. Align ECB protection Bar to vehicle. Tighten all bolts. **See figure 16 and 17.**
29. Complete assembly of air dams and lower plastic bumper support as per reverse of steps 2 to 4.

30. Check operation of ECB indicator / park lights and ECB bumper lights.

ENSURE NUMBER PLATE IS CLEARLY VISABLE

Note: When fitting/refitting the licence plate to the vehicle, ensure there is no obstruction to licence plate vision in accordance with local authorities. If required relocate licence plate to an alternate location.

Further VFPS Notes:

- a) Do not attach VFPS to the vehicle using anchorages not intended for this purpose (e.g. engine mounting bolts).
- b) Do not use this product for any vehicle make or model, other than those specified by the VFPS manufacturer.
- c) Do not remove the plaque or label from the VFPS.
- d) Do not modify the structure of the VFPS in any way.
- e) No accessory or fitment should project forward of the VFPS forward profile.
- f) **ENSURE THESE INSTRUCTIONS ARE LEFT WITH VEHICLE OWNER AND/OR OPERATOR.**

IMPORTANT INFORMATION

Periodically check bolts and nuts for correct tightness, especially if travelling on rough roads

FITTING KIT

1 – ECB steel mounting bracket	14 – M6 flat washers
2 – ECB top mount gussets – in kit	2 – M6 spring washers
1 – Pair ECB lower mount gussets – in kit	7 – M6 nyloc nuts
10 – M10 x 1.5 x 30 bolts	2 – M6 nuts
6 – M10 x 1.5 x 40 bolts	2 – 8 – 18 gauge 12mm PK self-drilling screw
32 – M10 flat washers	1 – ECB indicator / park kit (ICLED105ECB)
16 – M10 spring washers	8 – cable locks
16 – M10 x 1.5 nuts	1 – Fog light kit
2 – M8 x 120 bolts	1 – quick click fog harness (IC10D40S1004ECBH)
2 – M8 x 110 bolts	2 – Fog light surrounds
8 – M8 flat washers	10 – 300mm zip ties
4 – M8 Nyloc nuts	1 – 2200 mm length 6mm clip lock trim
9 – M6 x 20 bolts	2 – 800 mm length 6mm clip lock trim

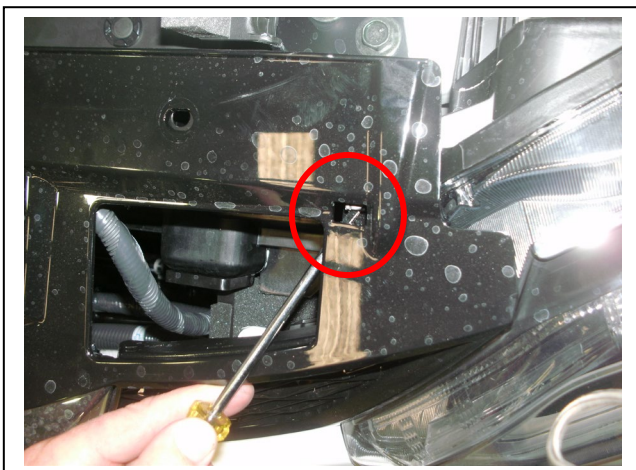


Figure 1: Placement of clip and screwdriver for removal.



Figure 2



Figure 3

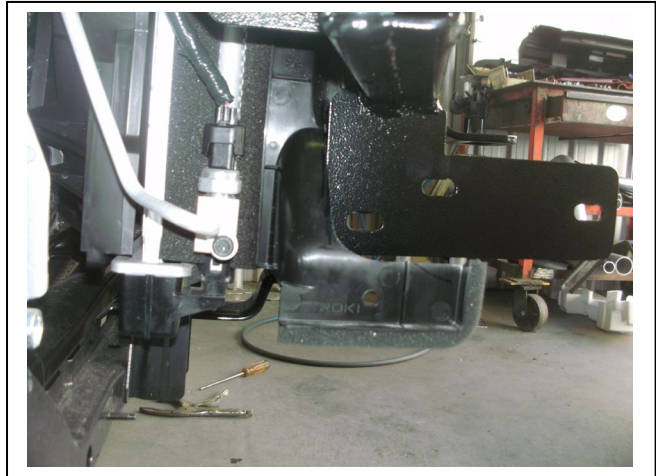


Figure 4: Big tube mount used for photo.



Figure 5: ECB Steel mount fitted.

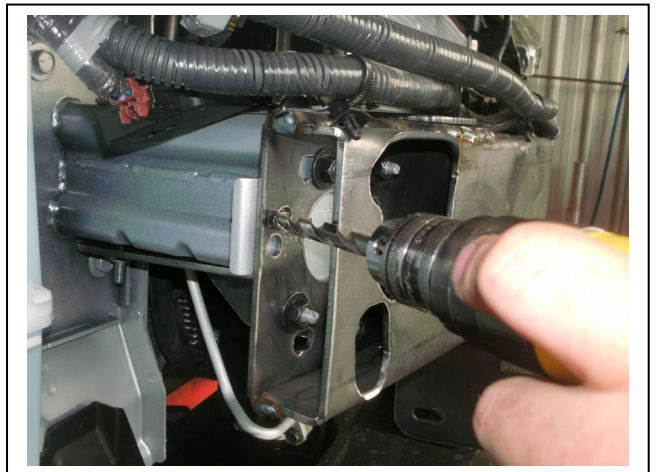


Figure 6: Drilling outer hole on driver's side



Figure 7: Top mount gusset, removed from vehicle for photo

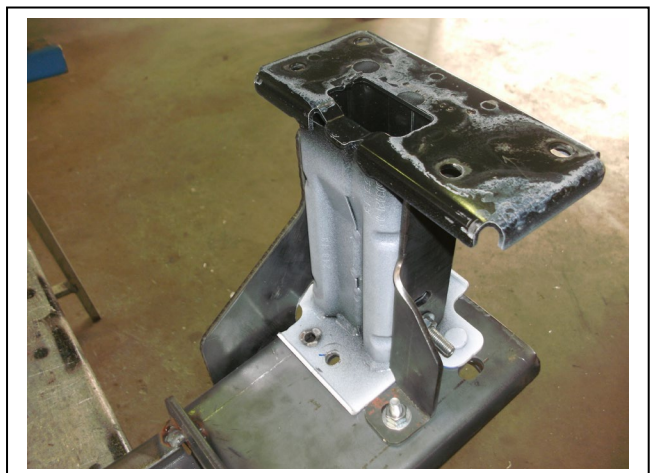


Figure 8: Lower mount gusset, removed from vehicle for photo

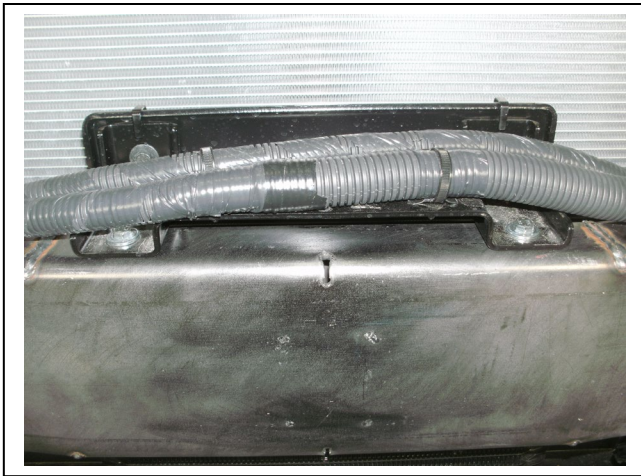


Figure 9: Oil cooler remounted

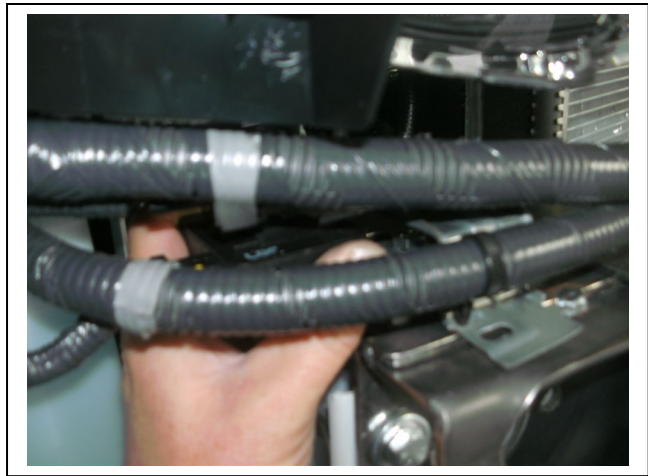
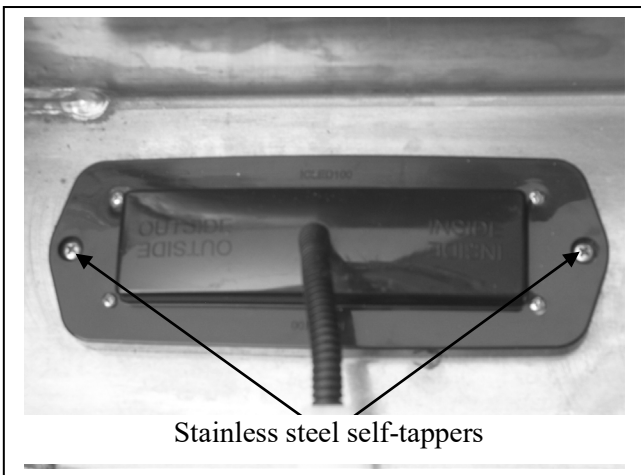
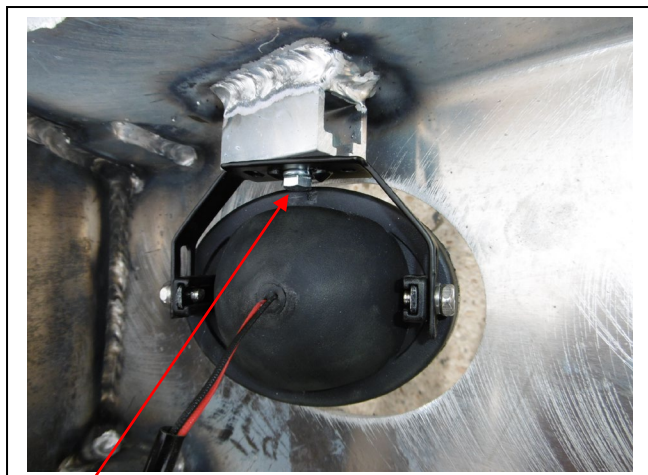


Figure 10: Sensor box being remounted into position



Stainless steel self-tappers

Figure 11



M6 bolt

Figure 12

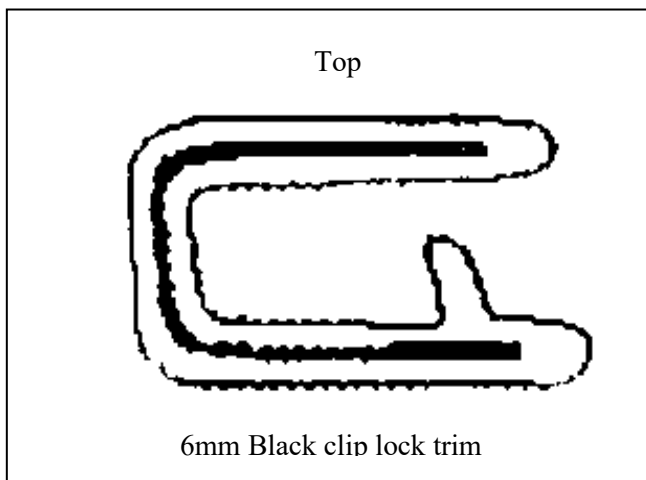
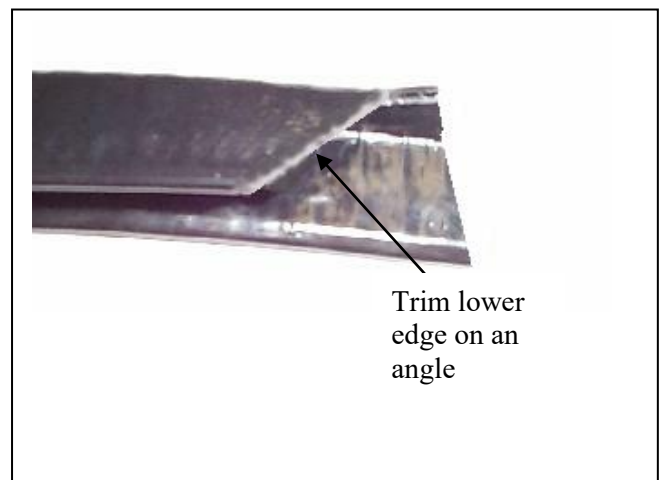


Figure 13



Trim lower edge on an angle

Figure 14

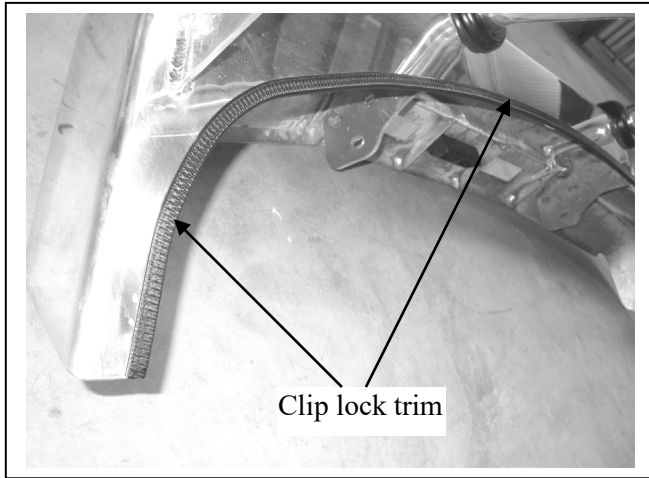


Figure 15



Figure 16: Front view



Figure 17: Side View

Thank you for purchasing an ECB Product

Please ensure that you read the below and complete the warranty registration.

Vehicle Owner / Operator Responsibilities and Product Care

Important Information

It is the responsibility of the vehicle owner and operator to ensure all nuts and bolts are checked periodically, especially when travelling on corrugated roads. Please ensure these are tightened as per the steps in the provided fitting instructions.

While ECB products are manufactured from high tensile alloy the vehicle owner / operator must check any steel mounting brackets or steel auxiliary parts for signs of corrosion. If you find any corrosion, please contact ECB Pty Ltd to discuss an appropriate solution – 1800 069 145 or www.ecb.com.au.

Product Care

Polished Products

Being a premium mirror polished finish, regular maintenance will be required to keep that iconic ECB shine. We recommend using our own brand of Aluminium Polish. This formula has been tried and tested and in our opinion is the world's best standard.

Directions: Apply a small quantity of Aluminium Polish to a clean soft cloth and rub the metal surface. The longer the rubbing the brighter the surface becomes. Wipe off Aluminium Polish with clean soft cloth. Also suitable for motorised buffing machines. Note: There are more specific details on the polish bottle. Please read before use.

Powder Coated Products

Our powder coated finishes are very low maintenance. In fact, there is actually very little you will ever need to do for this product. Just clean it as you would your car and it will stay looking good as new.

ECB Aluminium Polish

When you're looking for that showroom finish look for your polished automotive products, you can depend on the no compromise quality of East Coast Bullbars Aluminium Polish. This specifically designed product is the best polish available and we guarantee that this \$#!+ works. Within our decades of manufacturing polished alloy products, we have trialled a large range of different polishes on the market and believe without a doubt that nothing beats the finish quality of East Coast Bullbars Aluminium Polish.

East Coast Bullbars Aluminium Polish is excellent for use by hand and is ideal for polished bullbars, nudge bar and stainless-steel products. This polish will clean, polish and protect your product from the elements whilst bringing your products back to that showroom finish look.





**Lighter
Stronger
Better!**

A: 29 Snook St Clontarf QLD 4019
A: PO Box 122 Margate QLD 4019
P: 07 3897 5700
F: 07 3811 6480
E: info@ecb.com.au
W: ecb.com.au
W: customalloy.com.au



Warranty Registration

Please Register your purchase online www.ecb.com.au/warranty-registration

If you have any questions, please contact our national office on 1800 069 145 or www.ecb.com.au

Or post the below information back to ECB, PO Box 122, Margate, QLD 4019.

Contact Details

Name:	
Address:	
Email:	
Phone:	

Purchase Details

Purchased from:	
Date of Purchase:	

Product Details

(You can find this information on the silver label of your ECB Product)

Part Number:	BN112SY
Work Order Number:	

By submitting this registration, you automatically subscribe to ECB's mail outs. You can unsubscribe at any time.



**Lighter
Stronger
Better!**

A: 29 Snook St Clontarf QLD 4019
A: PO Box 122 Margate QLD 4019
P: 07 3897 5700
F: 07 3811 6480
E: info@ecb.com.au
W: ecb.com.au
W: customalloy.com.au



We value your comments

Dear Fitter,

ECB would like to know how you went with the installation of this product. We value your comment and may need to contact you to clarify some details so please complete your contact details clearly.

We would appreciate if you could complete as many of the following details as possible.

Your Name:	Your contact No.
Product Part No.	Product Invoice No.
Product Description:	Make, model, and year of vehicle:
Product Work Order No.	Company your from/Company product purchased from:

Date of Fitment: ___/___/___

Was the fitting hardware supplied complete?

Yes

No

If no what was not supplied

Did the installation go well?

Yes

No

Please provide comments

Please draw diagrams if you need to.

Post to
Reply Paid 122
PO Box 122
Margate QLD 4019

Fax to
(07) 3283 1168



**Lighter
Stronger
Better!**

A: 29 Snook St Clontarf QLD 4019
A: PO Box 122 Margate QLD 4019
P: 07 3897 5700
F: 07 3811 6480
E: info@ecb.com.au
W: ecb.com.au
W: customalloy.com.au



DESPATCH CHECKLIST BN112SY

Work Order #		See other side of this page for photos of all mounts
Finish:		
Transport:		
Due Date:		

- OC.....1 – Steel mounting bracket.
- BK.....2 – Steel top mount gussets
- BK.....1 – Pair Steel lower mount gussets
- OC.....2 – ECB overrides
- OC.....2 – 6mm air vents
- BK.....1 – Bolt Kit
- BK.....1 – Indicator / DRL / Park Light Kit (ICLED105ECB)
- BK.....1 – Bumper light kit (ICLED2020DRL)
- BK.....2 – Bumper light trims
- BK.....1 – Quick click Bumper wiring kit (IC10D40S1004ECBH)
- BK.....1 – 2200 length 6mm clip lock trim
- BK.....2 – 800 length 6mm clip lock trim

_____/_____
Wrapper's initials / Checker initials



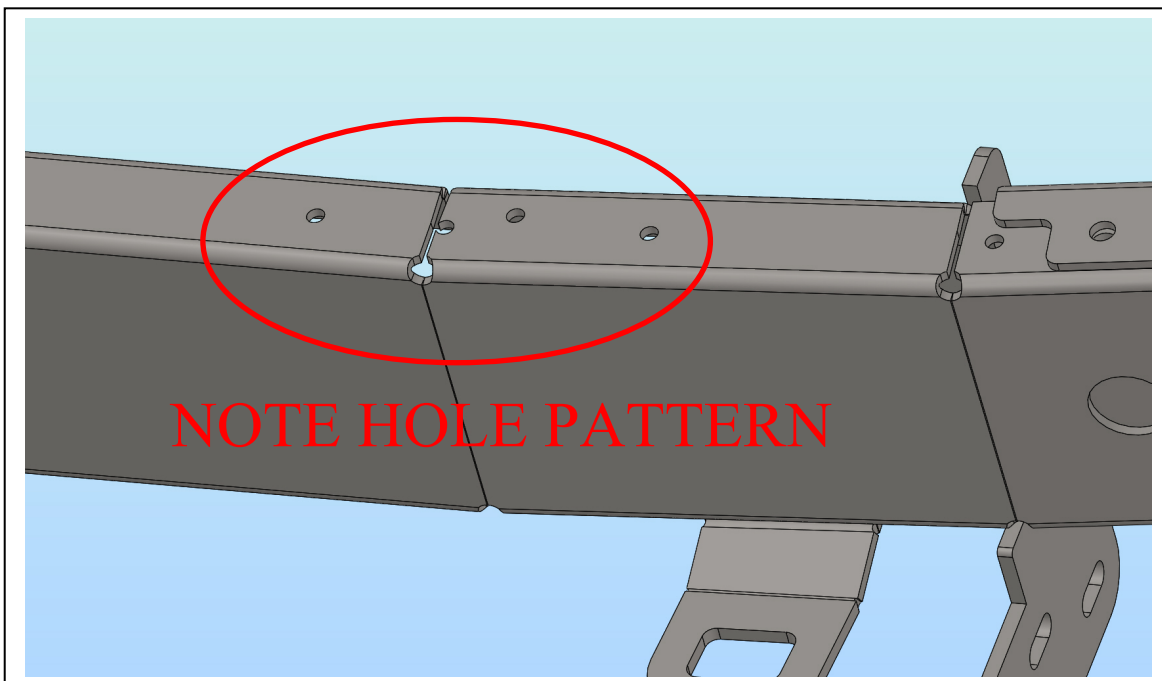
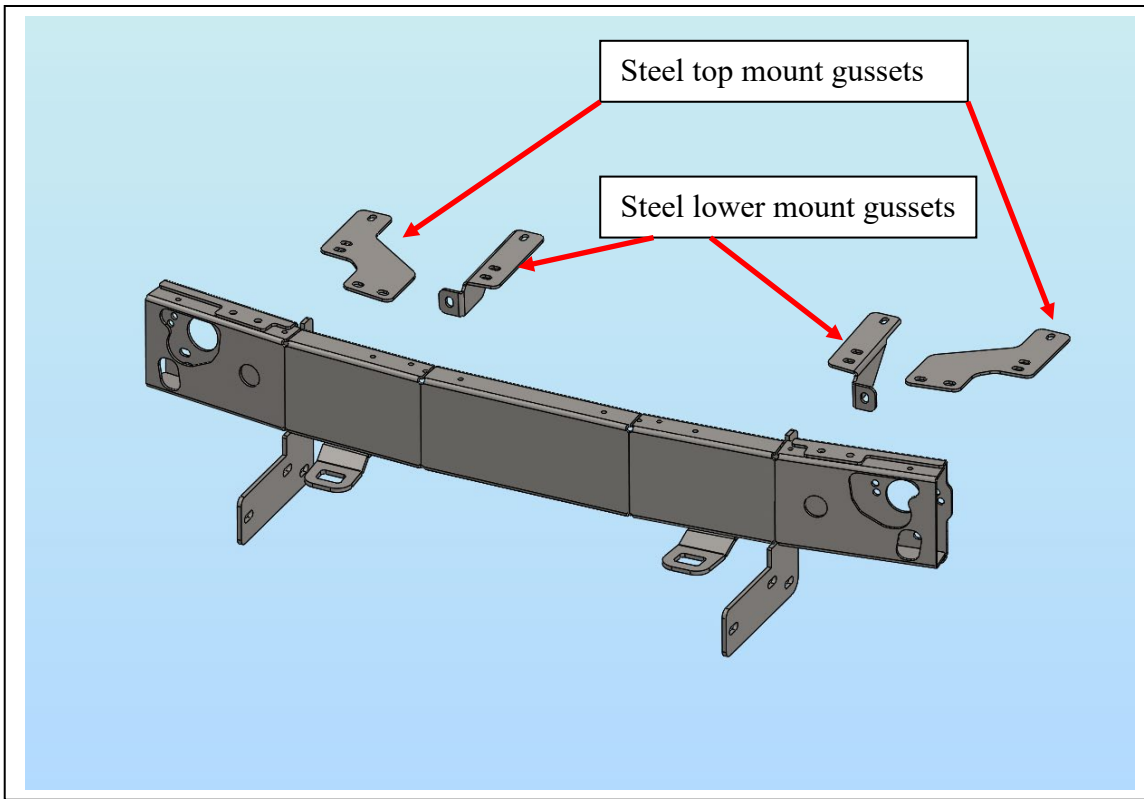
Is this product “the best it can be” Yes
If **NO** fix before continuing

All parts checked and completed by:

Nut and bolts: _____ Date / /

Order control: _____ Date / /

Final wrap check: _____ Date / /



/

Wrapper's initials / Checker initials